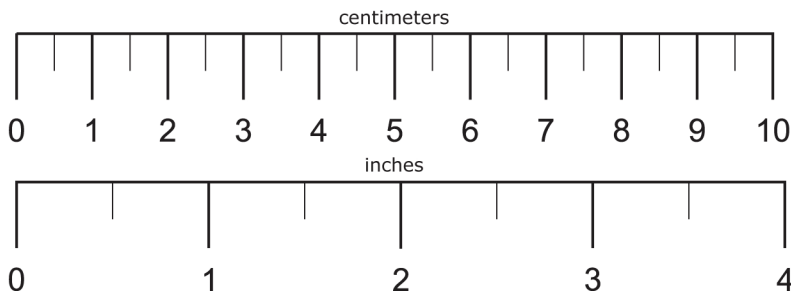
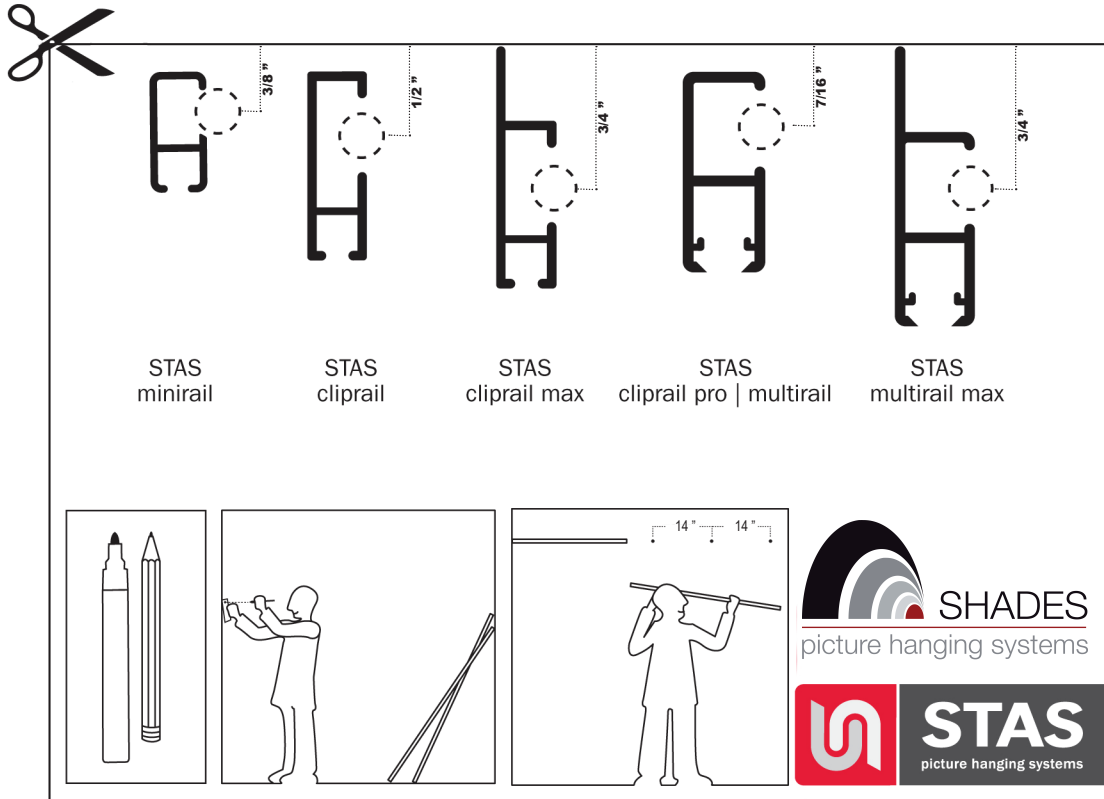


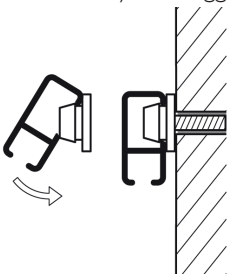
# Caution! Print this PDF at 100% size

For any questions call us at (805) 691-9047



Instructions for using this template:

This template is designed to assist you in determining where to place your drilled holes when installing your new **STAS** hanging system. Every wall and ceiling are different and every person has a different methodology in how and where they want to install our systems. We encourage our clients to experiment with all our systems, however, we also have some suggestions that will help the installation process go smoothly. We suggest leaving a gap between the top of our rail and your ceiling of  $3/16$ ". This allows enough space to drill and then to lay the rail on top before "clicking" or snapping the rail into place (see diagram).



The best way to use this template is to cut along the indicated line, tape or glue this template onto a piece of cardboard or stiff flexible surface maintaining a straight edge at the top, then poking a hole right in the center of the dotted dot of the rail that you purchased. The hole should be big enough to fit a pencil snugly but not too big that it allows the pencil to move around freely. Then with template and pencil in hand and in the hole, place the cardboard/template against the wall resting the top edge on the ceiling. With the pencil firmly touching the wall and the template edge along the ceiling slide it across the entire length of the wall creating a linear mark indicating your drilling area. In order to comply with our weight capacities it is important that you adhere to the 14 inch (36 cm) distance from one hole to the next. Mark off 14 inches from hole to hole and begin drilling and applying the anchors, screws and clips.